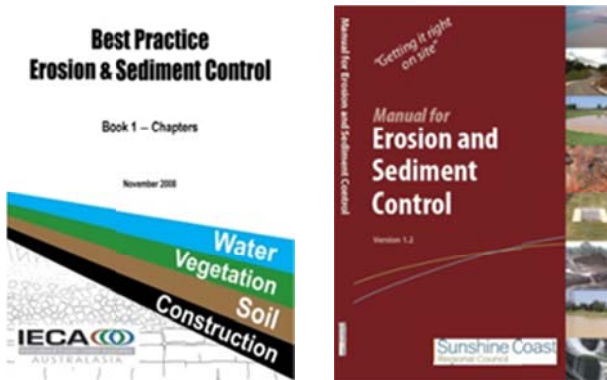




Centre for Environmental Training

Erosion and Sediment Control

Brisbane, QLD



21-24 February 2017



Covers the theory required for the International Erosion Control Association Certified Professional in Erosion and Sediment Control (CPESC) Fundamentals Examination

in conjunction with



Erosion and Sediment Control

Erosion and Sediment Control

Four one-day professional development workshops for practitioners in Erosion and Sediment Control, based on the International Erosion Control Association (IECA) Best Practice in Erosion and Sediment Control Manual and the Sunshine Coast Regional Council Erosion and Sediment Control Manual. Together the workshops cover the theory required for the International Erosion Control Association (IECA) Fundamentals Examination for Certified Professional in Erosion and Sediment Control (CPESC). Examination candidates need to know both the theory and its application in a practical context and must have requisite experience. On completion of the course, arrangements can be made through the International Erosion Control Association (IECA) Australasia office, email: admin@austieca.com.au, to take the examination.

Workshop 1: Fundamentals of Erosion and Sediment Control

Workshop 1 focuses on the fundamentals of erosion and sediment control. Topics include the theory of soils and soil conservation; how, when and why to use various erosion and sediment control products or practices, plus real-world examples of reading and understanding erosion and sediment control plans. It provides training in the selection, construction and maintenance of temporary and permanent erosion and sediment control measures on construction sites.

Workshop content:

- Theory of Erosion and Sediment Control
- Soils and Soil Conservation
- Implementing, Selecting, Maintaining and Inspecting Erosion and Sediment Control Best Management Practices
- Erosion and Sediment Control Products and Techniques

Workshop 2: How to Use the Guidelines

Workshop 2 gives a broad overview of the material contained in the various best practice guidelines. This workshop provides an understanding of the key technical and management issues relating to erosion and sediment control in the urban environment in Queensland. Workshop participants require a calculator.

Workshop content:

- Site Assessment and Site Planning
- Erosion Hazard Assessment and Use of the RUSLE Equation
- Site Management and Inspection
- Practice Examples – Small Sites, Culverts, Linear Projects

Workshop 3: Water Management on Construction Sites

Workshop 3 trains those responsible for the selection, design or review of temporary and permanent erosion and sediment control measures on urban construction sites. This workshop focuses on sediment basins and water diversion structures, two key features of any Erosion and Sediment Control Plan. Participants should bring a calculator, notebook, pen and laptop computer. Software will be provided.

Workshop content:

- Theory of Water Management
- Application of Water Management on Construction Sites
- Sizing and Designing Sediment Basins
- Designing Catch Drains and Diversion Structures

Workshop 4: Preparing and Reviewing Erosion and Sediment Control Plans

Workshop 4 covers the identification and design of temporary and permanent erosion and sediment control measures on construction sites and their delineation on a plan. This workshop pulls together the information presented at the earlier Workshops 1, 2, and 3. It involves extensive group work and practical exercises to prepare and review ESCPs on major projects. Participants should ideally bring a laptop to this workshop to complete the various exercises (one between two or three participants is acceptable).

Workshop content:

- Theory of Plan Preparation
- Guided Practice and Groupwork in the Preparation of Larger-Scale Erosion and Sediment Control Plans
- Practice Examples – Subdivisions/Reconfigurations, Road and Rail Projects, Commercial/Industrial and Mining

Erosion and Sediment Control

Course Enrolment Form (1746)

If you would like to enrol in this course please complete your details below and fax / email or post back to us as soon as possible.

Participant Name _____

Organisation _____

Billing Address _____

Postcode _____

Purchase Order Number _____

(If required by your organisation for invoicing purposes)

Tel _____

e-mail _____

PLEASE REGISTER ME FOR:

Workshop 1: Fundamentals of Erosion and Sediment Control **21 February 2017**

Workshop 2: How to Use the Guidelines **22 February 2017**

Workshop 3: Water Management on Construction Sites **23 February 2017**

Workshop 4: Preparing and Reviewing ESCPs **24 February 2017**

One workshop \$875 + GST

Two workshops \$1,650 + GST

Three workshops \$2,305 + GST

Four workshops \$2,890 + GST

Course fee includes comprehensive course notes, software as indicated, lunches and morning and afternoon teas. Please bring required materials as noted in the brochure.

Course Venue: Mantra on Queen – 570 Queen Street, Brisbane, QLD 4000

Parking onsite for hotel guests \$20/day, Central Train Station – 1.1km, Brisbane Airport – 13.9km

Times: 9.00 am – 5.00 pm each day.

Payment Terms and Conditions: Once enrolment form is received we will send you a tax invoice outlining payment details. Payment can be made by Electronic Funds Transfer or by cheque payable to The Centre for Environmental Training.

Reservation deadline is one week prior to any workshop.

Cancellations must be notified five working days prior to course start date or full fees will be payable.

Who should attend these workshops?

- Site construction personnel
- Developers and Consultants
- Civil and Environmental Engineers
- Local and State Government Officers
- Those responsible for reviewing Erosion and Sediment Control and Soil and Water Management Plans
- Others wishing to update their knowledge in line with the current best practice approaches in the guidelines
- Those wishing to sit the CPESC Fundamentals Examination

Access to the Guidelines

All attendees should have access to the IECA (2008) Best-Practice Erosion and Sediment Control Manual during the workshops, or should be able to share a copy with a co-worker.

The course includes numerous examples and exercises that require the use of this document.

In addition, having a personal copy available during the workshops will enable attendees to make notes on, or flag, those pages and sections that are most relevant to their work. **We strongly recommend that each attendee have a copy of this text.**

IECA Best Practice in Erosion and Sediment Control Manual can be purchased from the IECA. An on-line order can be placed at: <http://www.austieca.com.au/products/bpesc/books1-3>

Other required course documents and software, including access to an electronic copy of the Sunshine Coast Regional Council Erosion and Sediment Control Manual, will be provided prior to the course.

Certified Professional in Erosion and Sediment Control (CPESC)

These workshops are designed to cover the theory required for the International Erosion Control Association **Certified Professional in Erosion and Sediment Control (CPESC)** Fundamentals Examination. Examination candidates need to know both the theory and its application in a practical context and must have requisite experience.

Further information on the CPESC qualification can be obtained from the IECA website:

<http://www.austieca.com.au/CPESC/tabid/62/Default.aspx>

Information on opportunities for completion of the IECA CPESC exam can be obtained from IECA Australasia, email:

admin@austieca.com.au

Further E&SC Courses

These workshops:

Workshop 1: Fundamentals of Erosion and Sediment Control
Workshop 2: How to Use the Guidelines
Workshop 3: Water Management on Construction Sites
Workshop 4: Preparing and Reviewing ESCPs

and for those working in specific industry sectors, specialised Erosion and Sediment Control Courses for:

- **Main Road Construction**
 - **Rail Construction and Maintenance**
 - **Coal Seam Gas Operations ***
 - **Services and Linear Easements**
 - **Unsealed Roads**
 - **Mines and Quarries**
 - **Waste Landfills**
- along with our very popular course
- **Practical Erosion and Sediment Control for the Workforce ***

can be run as in-house courses at any location.



Please contact us to discuss your training requirements.

The Centre for Environmental Training
197 Main Road

Cardiff NSW 2285 Australia

Telephone: 02 4954 4997

Facsimile: 02 4954 4996

e-mail: mail@environmentaltraining.com.au

web: www.environmentaltraining.com.au